



THE UNITED KINGDOM VEHICLE APPROVAL AUTHORITY

COMMUNICATION CONCERNING THE APPROVAL GRANTED ⁽¹⁾/ APPROVAL EXTENDED ⁽¹⁾/
APPROVAL REFUSED ⁽¹⁾/ APPROVAL WITHDRAWN ⁽¹⁾/ PRODUCTION DEFINITELY
DISCONTINUED ⁽¹⁾ OF A LATERAL PROTECTION DEVICE (LPD) PURSUANT TO PART II OF
REGULATION NO. 73.01



Approval No: E11 73R-01 1038

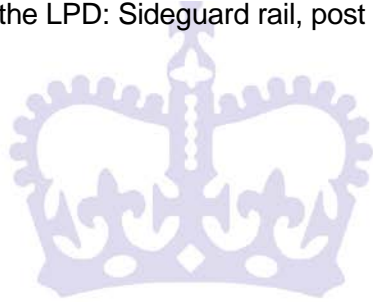
Extension No: Not Applicable

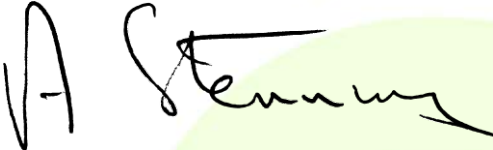
1. Trade name or mark of LPD: John Adams Ltd
2. Type of LPD: LPD
3. Name and address of manufacturer:
John Adams Ltd
Atlas Industrial Estate
Edgefauld Drive
Springburn
Glasgow
G21 4UR
United Kingdom
4. If applicable, name and address of manufacturer's representative: Not Applicable
5. Characteristics of the LPD (dimensions and its links): See manufacturer's documentation
6. Test conducted on a rigid bench/on a vehicle/on a representative part of the vehicle⁽¹⁾
7. Position on the LPD of the points of application of the test forces: Front/Middle/Rear
8. Vehicle category on which the LPD may be installed: N2, N3, O3, O4

Job No: VSM244881



- 9. Device submitted for approval on: 24 November 2011
- 10. Technical service responsible for conducting approval tests:
- 11. Date of report issued by that service: 08 August 2012
- 12. Number of report issued by that service: VSM244881
- 13. Approval: ~~GRANTED/REFUSED/EXTENDED/WITHDRAWN~~: ⁽¹⁾
- 14. Position of approval mark on the LPD: Sideguard rail, post and hinged legs
- 15. Place: BRISTOL
- 16. Date: 20 MAY 2013



17. Signature:  A. W. STENNING
Head of Technical and Quality Support Group

18. The following documents, bearing the approval number shown above, are available upon request.

Any remarks: Approval to Supplement 1

(1) Strike out what does not apply





LATERAL PROTECTION

REGULATION 73-01 Part 2

TYPE : LPD

TOTAL NUMBER OF SHEETS: 4

31st JANUARY 2013



Information document for approval of lateral protection device
(LPD) pursuant to Part II of Regulation No. 73

VCA Job No: VSM251144

0. GENERAL

- 0.1. Make (trade name of manufacturer): John Adams Ltd
- 0.2. Type and general commercial description(s): LPD
- 0.5. Name and address of manufacturer: John Adams Ltd
Atlas Industrial Estate
Edgefauld Drive
Springburn
Glasgow
G21 4UR
United Kingdom
- 0.7. In the case of components and separate technical units, location and method of affixing the EC approval mark: Approval marks will be attached to the sideguard rail, post and hinged legs by adhesive label
- 0.8. Name and address of assembly plant: See Section 0.5
- 0.9. Name and address of manufacturers representative: N/A
1. GENERAL CONSTRUCTION CHARACTERISTICS OF THE DEVICE
- 1.5. Material used for side members: SG50 Sideguard and pillars produced in alloy spec 6063T6
2. VEHICLE CATEGORIES TO WHICH THE UNIT APPLIES
- 2.1. Categories N2, N3, O3, O4
9. BODYWORK
- 9.2. Materials used and methods of construction: Steel or Aluminium cross bearers with a minimum I Value of no less than 80.23 lxx cm⁴
- 9.3. Characteristics of Lateral Protection Device: See drawings attached

Annex:

- Technical Drawing of Main Parts and Assembly (with material spec)
- Fitting Instructions

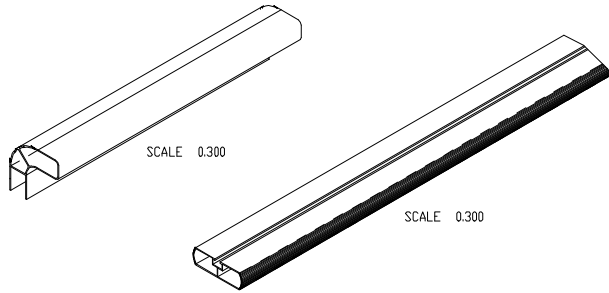
LIST OF DRAWINGS

- 1: KIT NO: JASGK01/AL
- 2: KIT NO: JASGK02/AL
- 3: KIT NO: JASGK03/AL
- 4: KIT NO: JASGK04/AL
- 5: KIT NO: JASGK05/AL
- 6: KIT NO: JASGK06/AL
- 7: KIT NO: JASGK01/ST
- 8: KIT NO: JASGK02/ST
- 9: KIT NO: JASGK03/ST
- 10: KIT NO: JASGK04/ST
- 11: KIT NO: JASGK05/ST
- 12: KIT NO: JASGK06/ST

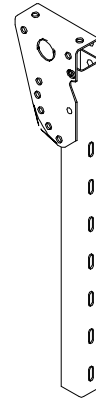


TWIN LATERAL PROTECTION DEVICE (LPD)
 KIT No. JASGK01/ST
 STEEL SUBFRAME

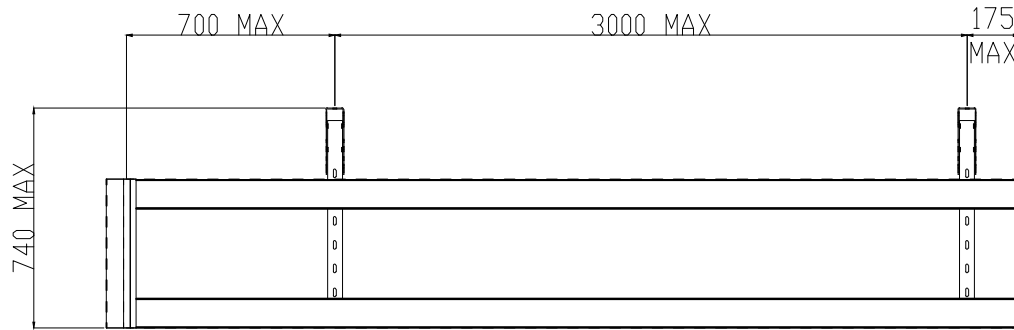
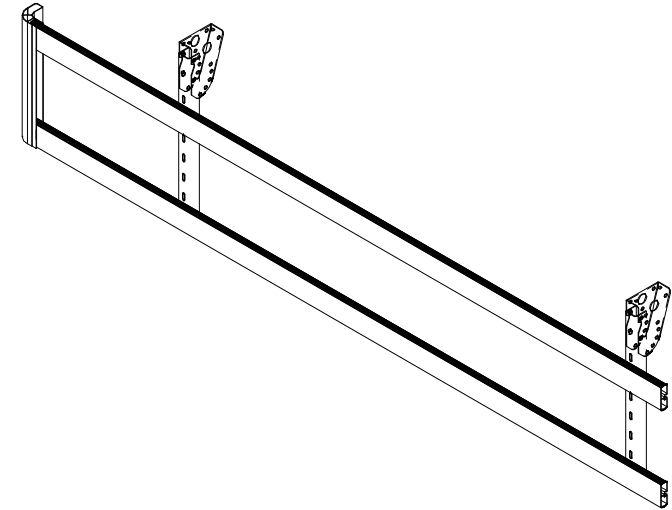
M10 x 35 (8.8)
 HIGH TENSILE Z\P
 40NM MAXIMUM
 TORQUE



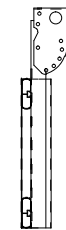
PLASTIC CAPS AVAILABLE FOR BOTH
 SG50P PILLAR AND SG50 RAIL



MC-SGL/AR



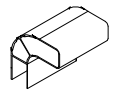
SCALE 0.130



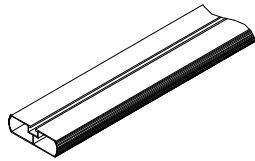
INSTALLATION GUIDE FOR TWIN LPD ON STEEL SUBFRAME
 WITH AN I VALUE NO LESS THAN 80.23IXXM4 Eg 100X50X2.5mm STEEL BEARER SECTION



SINGLE LATERAL PROTECTION DEVICE (LPD)
 KIT No. JASGK02/ST
 STEEL SUBFRAME



SCALE 0.300

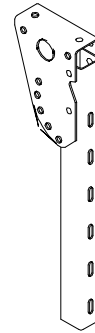


SCALE 0.300

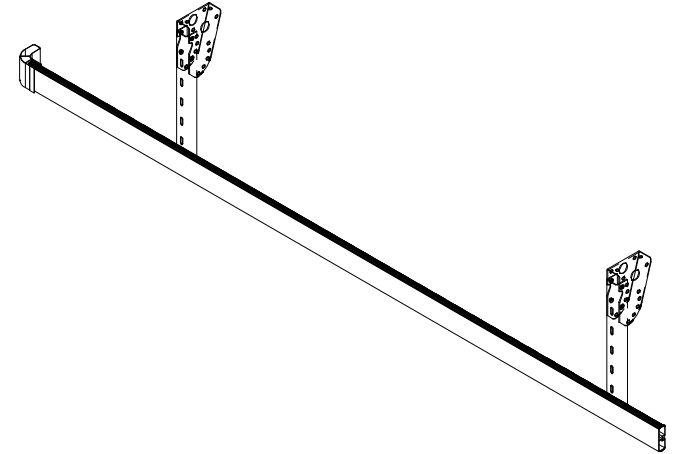
PLASTIC CAPS AVAILABLE FOR BOTH
 SG50P PILLAR AND SG50 RAIL



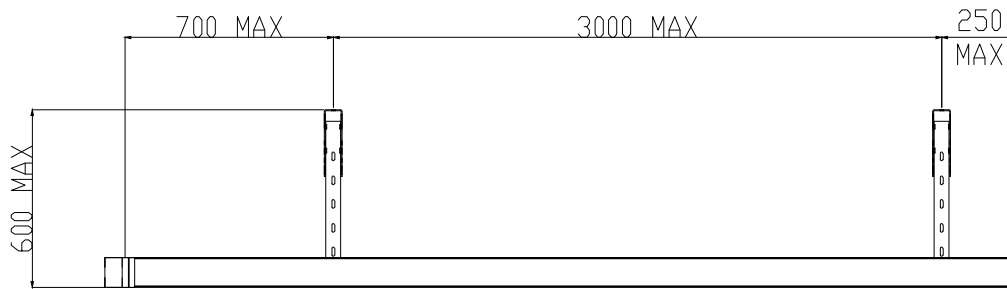
M10 x 35 (8.8)
 HIGH TENSILE ZNP
 40NM MAXIMUM
 TORQUE



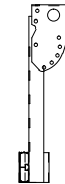
MC-SGL/AR



SCALE 0.130

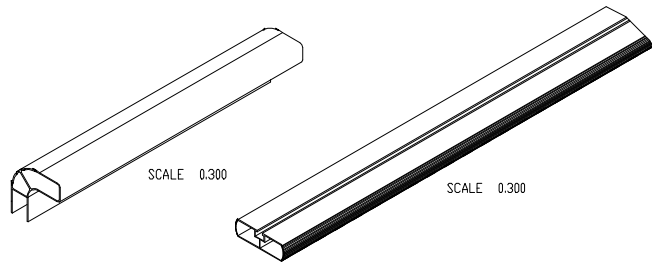


SCALE 0.130



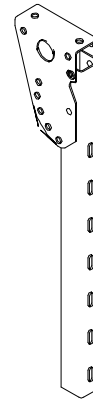
INSTALLATION GUIDE FOR SINGLE LPD ON STEEL SUBFRAME
 WITH AN I VALUE NO LESS THAN 80.23IXXCM4 Eg 100X50X2.5mm STEEL BEARER SECTION

TWIN LATERAL PROTECTION DEVICE (LPD)
 KIT No. JASGK03/ST
 STEEL SUBFRAME

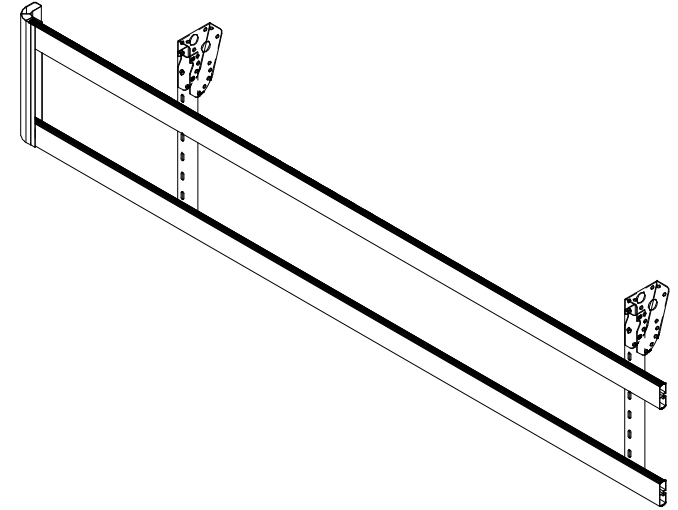


PLASTIC CAPS AVAILABLE FOR BOTH
 SG50P PILLAR AND SG50 RAIL

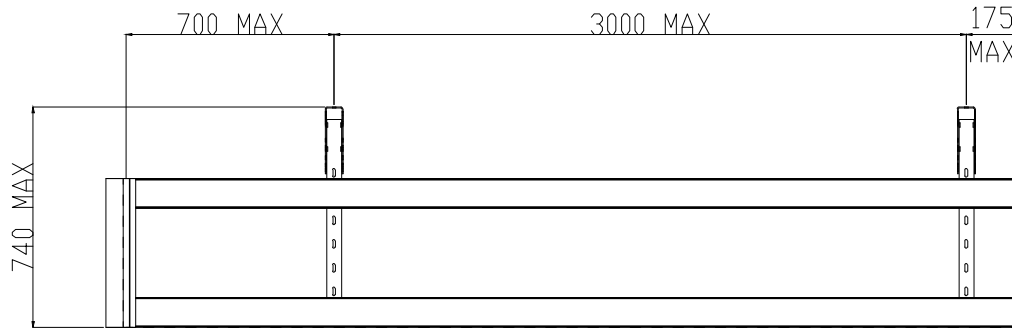
M10 x 35 (8.8)
 HIGH TENSILE Z\N
 40NM MAXIMUM
 TORQUE



MC-SGL/V



SCALE 0.130

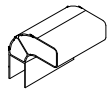


SCALE 0.130

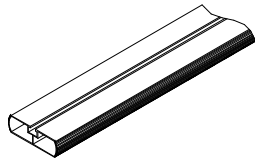
INSTALLATION GUIDE FOR TWIN LPD ON STEEL SUBFRAME
 WITH AN I VALUE NO LESS THAN 80.23IXXCM4 Eg 100X50X2.5mm STEEL BEARER SECTION



SINGLE LATERAL PROTECTION DEVICE (LPD)
 KIT No. JASGK04/ST
 STEEL SUBFRAME



SCALE 0.300

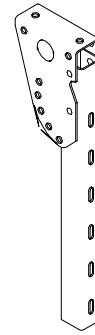


SCALE 0.300

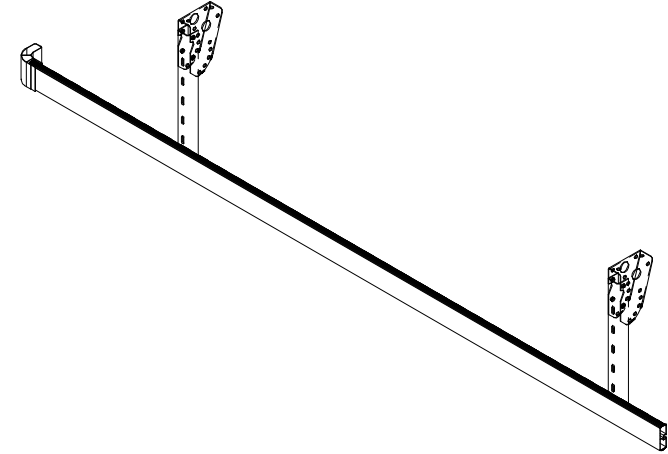
PLASTIC CAPS AVAILABLE FOR BOTH
 SG50P PILLAR AND SG50 RAIL



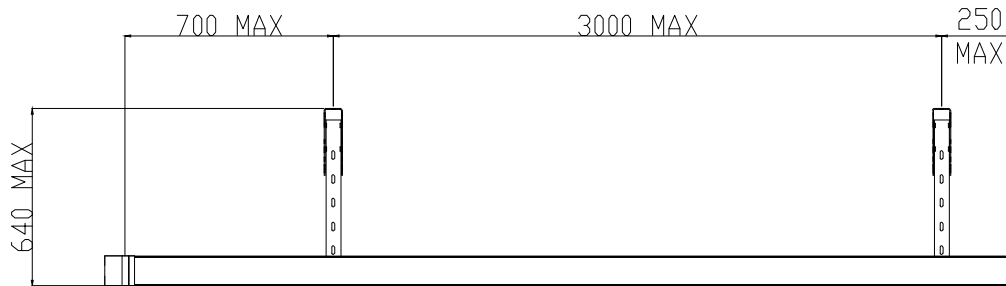
M10 x 35 (8.8)
 HIGH TENSILE ZNP
 40NM MAXIMUM
 TORQUE



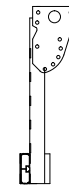
MC-SGL/V



SCALE 0.130



SCALE 0.130

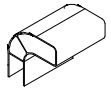


INSTALLATION GUIDE FOR SINGLE LPD ON STEEL SUBFRAME
 WITH AN I VALUE NO LESS THAN 80.23IXXCM4 Eg 100X50X2.5mm STEEL BEARER SECTION

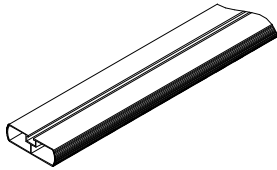


SINGLE LATERAL PROTECTION DEVICE (LPD)
 KIT No. JASGK05/ST
 STEEL SUBFRAME

M10 x 35 (8.8)
 HIGH TENSILE ZNP
 40NM MAXIMUM
 TORQUE

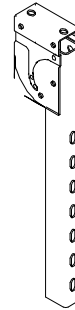


SCALE 0.300

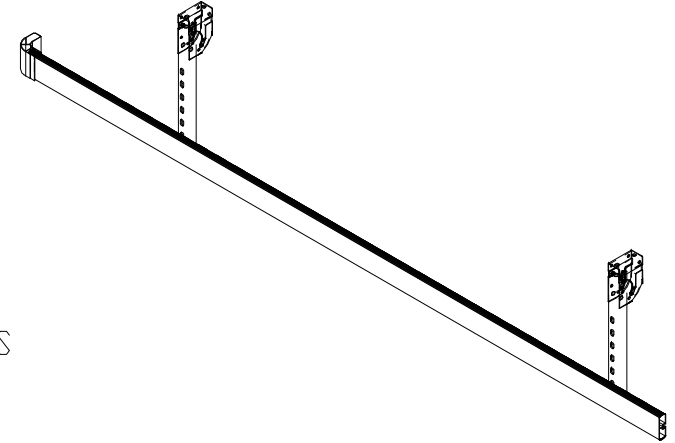


SCALE 0.300

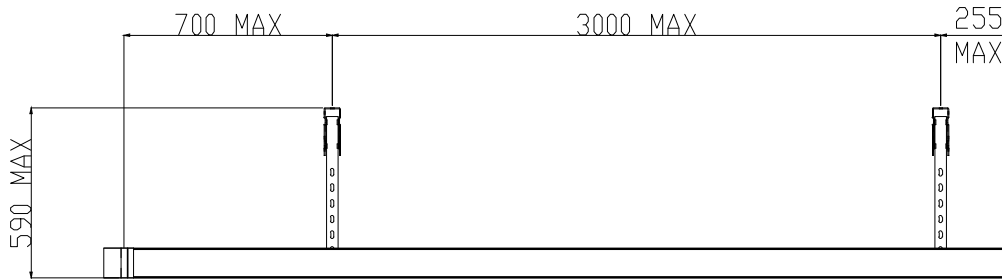
PLASTIC CAPS AVAILABLE FOR BOTH
 SG50P PILLAR AND SG50 RAIL



MC-SGL/MIS



SCALE 0.130



SCALE 0.130

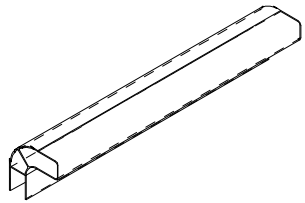


INSTALLATION GUIDE FOR SINGLE LPD ON STEEL SUBFRAME
 WITH AN I VALUE NO LESS THAN 80.23IXXCM4 Eg 100X50X2.5mm STEEL BEARER SECTION

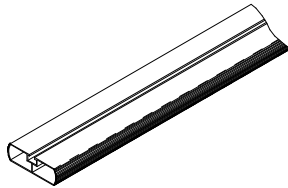


TWIN LATERAL PROTECTION DEVICE (LPD)
 KIT No. JASGK06/ST
 STEEL SUBFRAME

M10 x 35 (8.8)
 HIGH TENSILE Z\P
 40NM MAXIMUM
 TORQUE

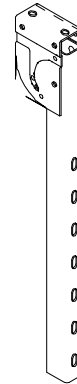


SCALE 0.300

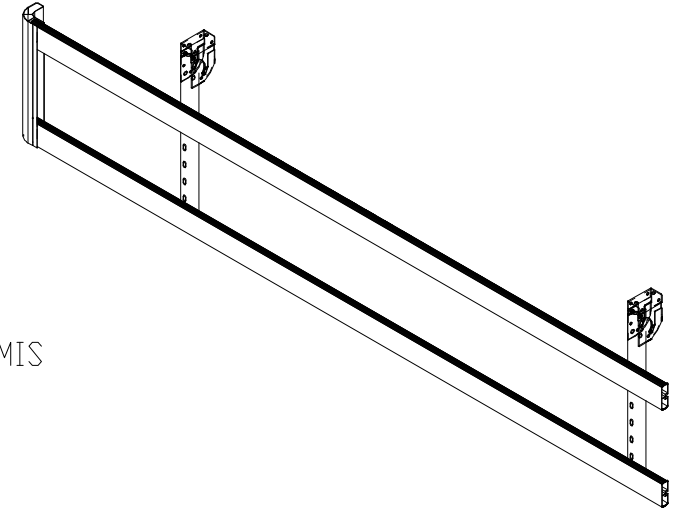


SCALE 0.300

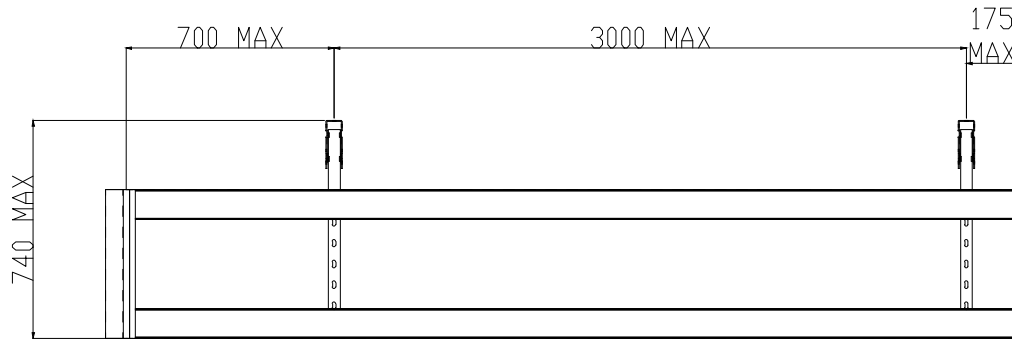
PLASTIC CAPS AVAILABLE FOR BOTH
 SG50P PILLAR AND SG50 RAIL



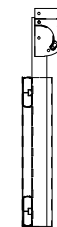
MC-SGL/MIS



SCALE 0.130

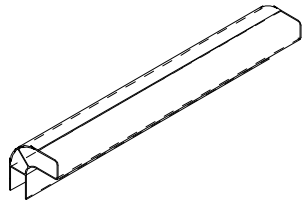


SCALE 0.130

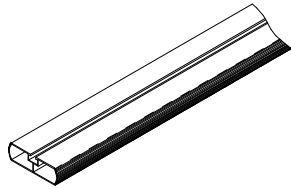


INSTALLATION GUIDE FOR TWIN LPD ON STEEL SUBFRAME
 WITH AN I VALUE NO LESS THAN 80.23IXCM4 Eg 100X50X2.5mm STEEL BEARER SECTION

TWIN LATERAL PROTECTION DEVICE (LPD)
KIT No. JASGK01/AL
ALUMINIUM SUBFRAME

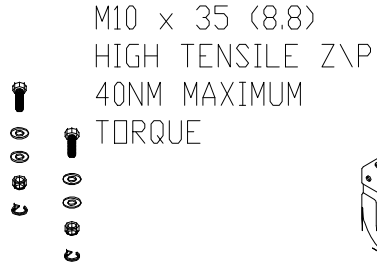


SCALE 0.300

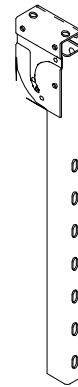


SCALE 0.300

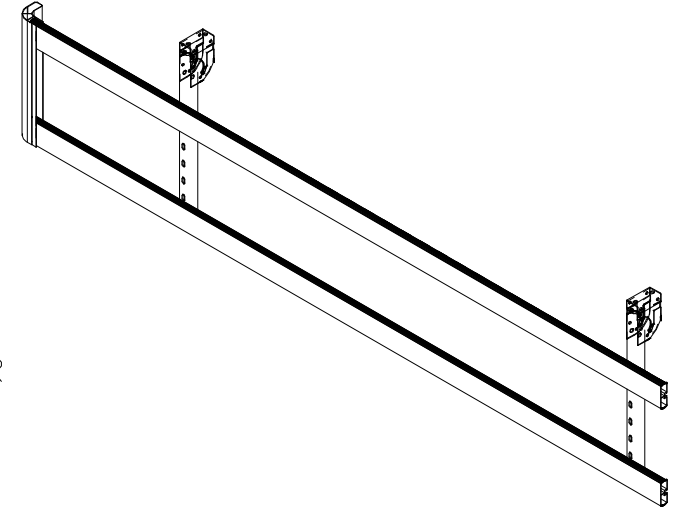
PLASTIC CAPS AVAILABLE FOR BOTH
SG50P PILLAR AND SG50 RAIL



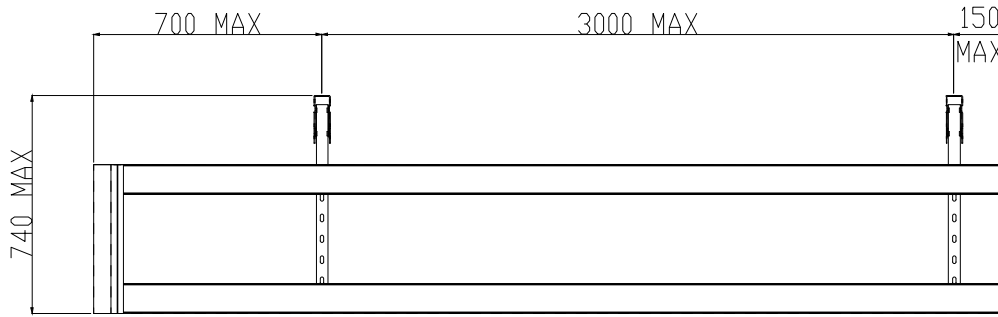
M10 x 35 (8.8)
HIGH TENSILE Z\N
40NM MAXIMUM
TORQUE



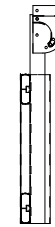
MC-SGL/AR



SCALE 0.130



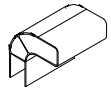
SCALE 0.130



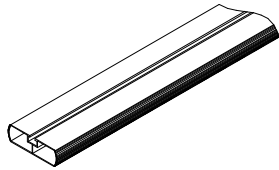
INSTALLATION GUIDE FOR TWIN LPD ON ALUMINIUM SUBFRAME
WITH ALUMINIUM BEARER SECTION WITH AN I VALUE NO LESS
THAN 80.23IXXCM4 Eg JOHN ADAMS PART No. AE-CB30

SINGLE LATERAL PROTECTION DEVICE (LPD)

KIT No. JASGK02/AL
ALUMINIUM SUBFRAME



SCALE 0.300

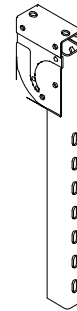


SCALE 0.300

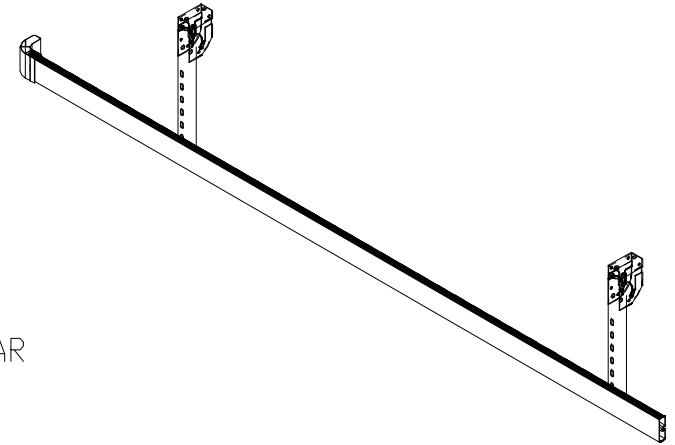
PLASTIC CAPS AVAILABLE FOR BOTH
SG50P PILLAR AND SG50 RAIL



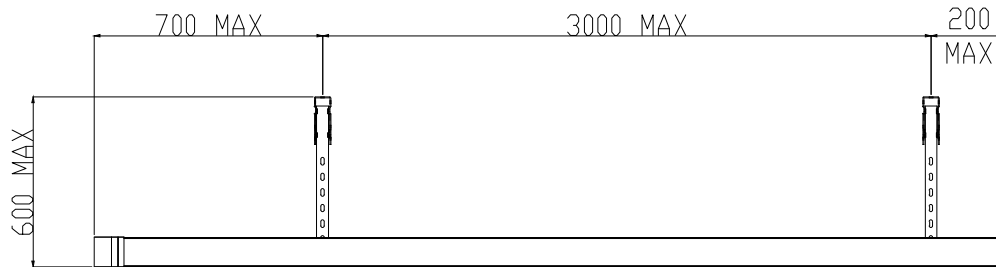
M10 x 35 (8.8)
HIGH TENSILE Z\N
40NM MAXIMUM
TORQUE



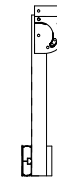
MC-SGL/AR



SCALE 0.130

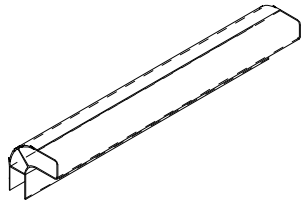


SCALE 0.130



INSTALLATION GUIDE FOR SINGLE LPD ON ALUMINIUM SUBFRAME
WITH ALUMINIUM BEARER SECTION WITH AN I VALUE NO LESS
THAN 80.23IXXCM4 Eg JOHN ADAMS PART No. AE-CB30

TWIN LATERAL PROTECTION DEVICE (LPD)
 KIT No. JASGK03/AL
 ALUMINIUM SUBFRAME



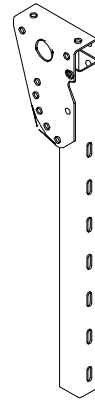
SCALE 0.300



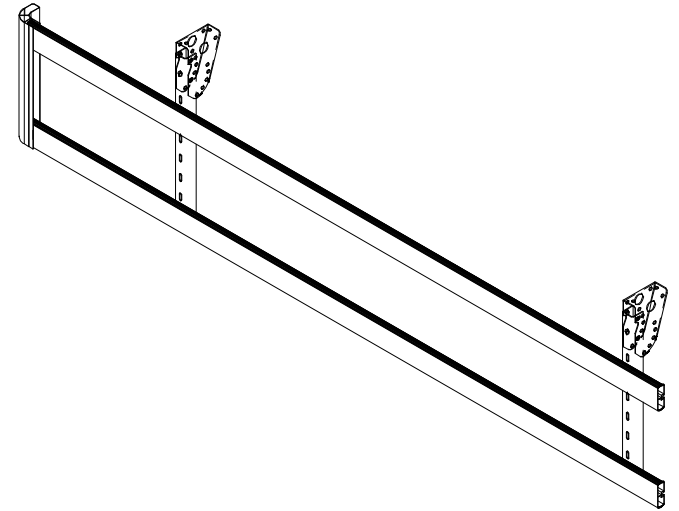
SCALE 0.300



M10 x 35 (8.8)
 HIGH TENSILE Z\N
 40NM MAXIMUM
 TORQUE

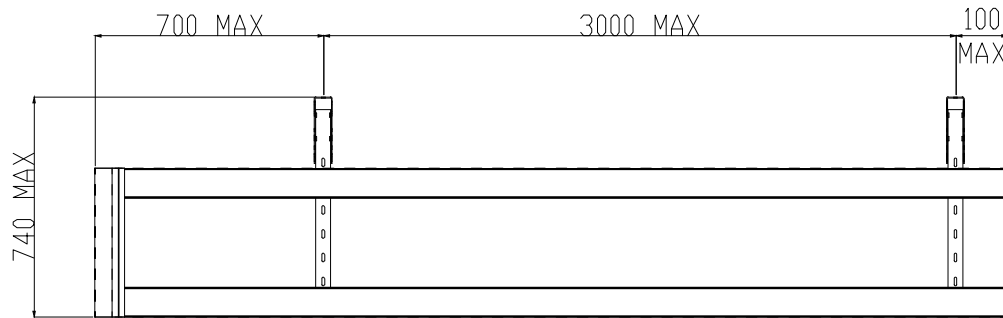


MC-SGL/V

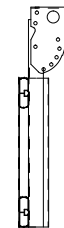


SCALE 0.130

PLASTIC CAPS AVAILABLE FOR BOTH
 SG50P PILLAR AND SG50 RAIL



SCALE 0.130

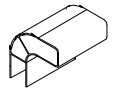


INSTALLATION GUIDE FOR TWIN LPD ON ALUMINIUM SUBFRAME
 WITH ALUMINIUM BEARER SECTION WITH AN I VALUE NO LESS
 THAN 80.23IXXCM4 Eg JOHN ADAMS PART No. AE-CB30

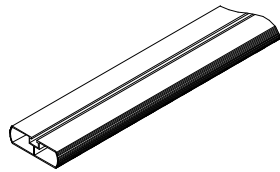
SINGLE LATERAL PROTECTION DEVICE (LPD)

KIT No. JASGK04/AL
ALUMINIUM SUBFRAME

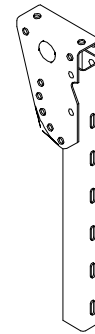
M10 x 35 (8.8)
HIGH TENSILE ZnP
40NM MAXIMUM
TORQUE



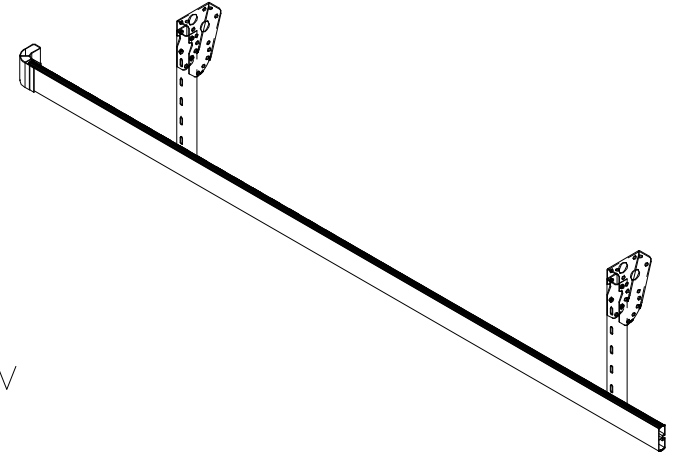
SCALE 0.300



SCALE 0.300

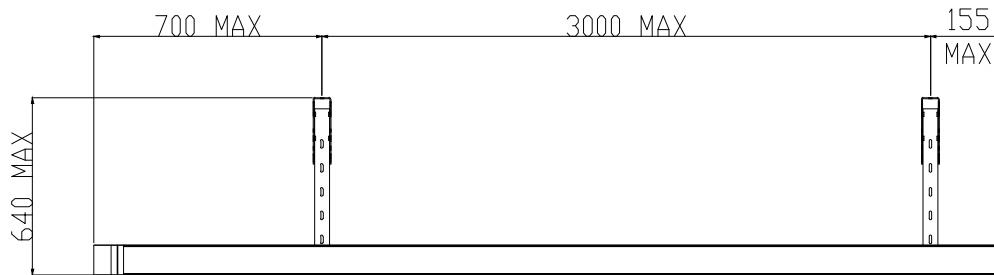


MC-SGL/V

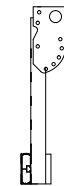


SCALE 0.130

PLASTIC CAPS AVAILABLE FOR BOTH
SG50P PILLAR AND SG50 RAIL



SCALE 0.130

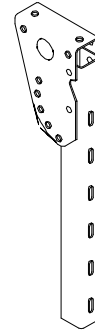


INSTALLATION GUIDE FOR SINGLE LPD ON ALUMINIUM SUBFRAME
WITH ALUMINIUM BEARER SECTION WITH AN I VALUE NO LESS
THAN 80.23IXXCM4 Eg JOHN ADAMS PART No. AE-CB30

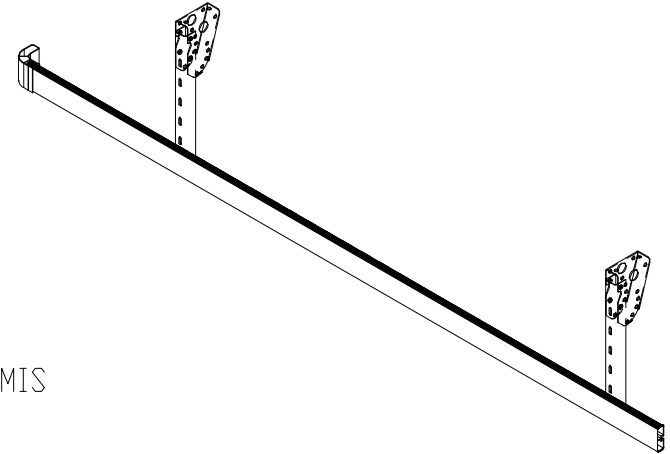
SINGLE LATERAL PROTECTION DEVICE (LPD)

KIT No. JASGK05/AL
ALUMINIUM SUBFRAME

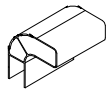
M10 x 35 (8.8)
HIGH TENSILE ZnP
40NM MAXIMUM
TORQUE



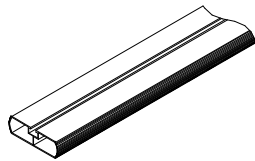
MC-SGL/MIS



SCALE 0.130

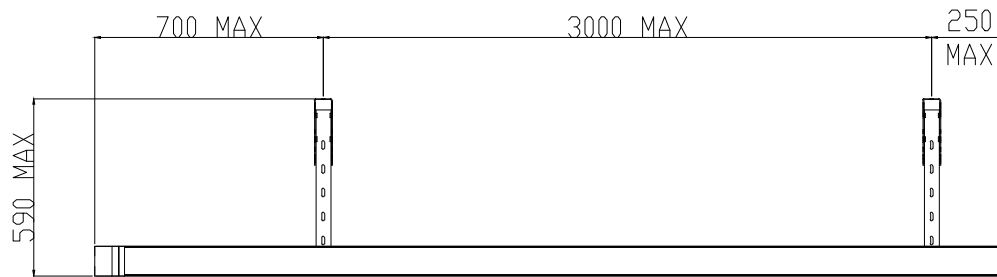


SCALE 0.300

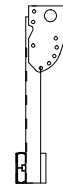


SCALE 0.300

PLASTIC CAPS AVAILABLE FOR BOTH
SG50P PILLAR AND SG50 RAIL

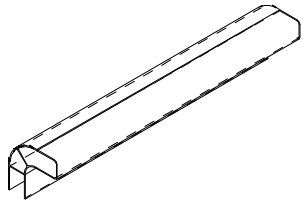


SCALE 0.130

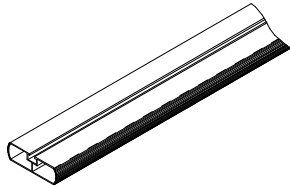


INSTALLATION GUIDE FOR SINGLE LPD ON ALUMINIUM SUBFRAME
WITH ALUMINIUM BEARER SECTION WITH AN I VALUE NO LESS
THAN 80.23IXXCM4 Eg JOHN ADAMS PART No. AE-CB30

TWIN LATERAL PROTECTION DEVICE (LPD)
 KIT No. JASGK06/AL
 ALUMINIUM SUBFRAME



SCALE 0.300

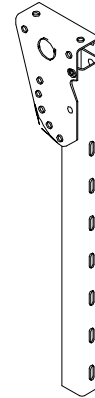


SCALE 0.300

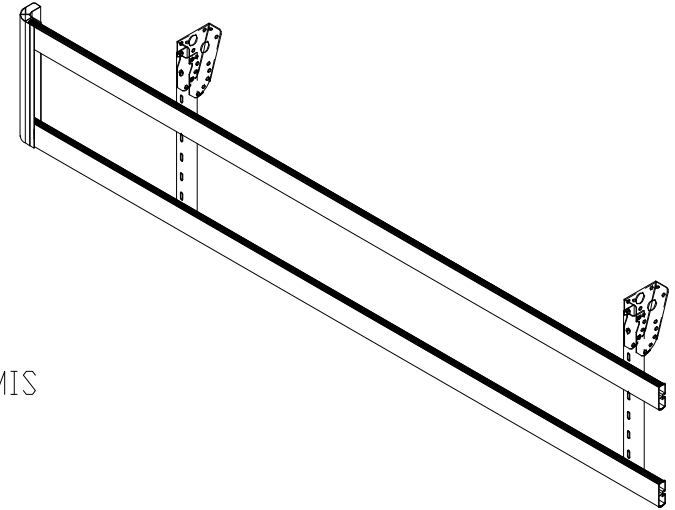
PLASTIC CAPS AVAILABLE FOR BOTH
 SG50P PILLAR AND SG50 RAIL



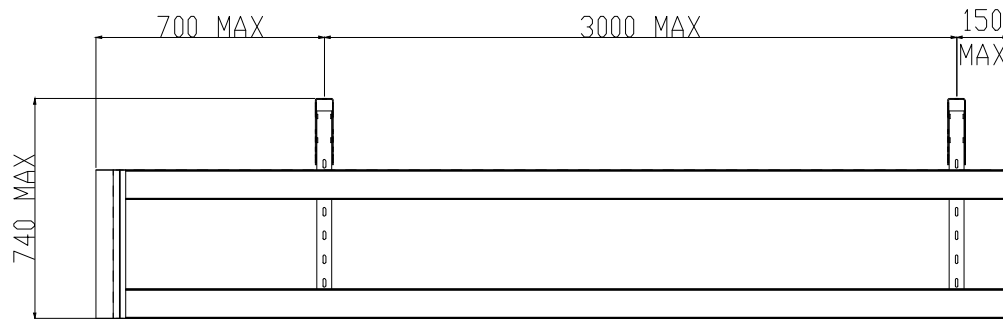
M10 x 35 (8.8)
 HIGH TENSILE ZNP
 40NM MAXIMUM
 TORQUE



MC-SGL/MIS



SCALE 0.130



SCALE 0.130

INSTALLATION GUIDE FOR TWIN LPD ON ALUMINIUM SUBFRAME
 WITH ALUMINIUM BEARER SECTION WITH AN I VALUE NO LESS
 THAN 80.23IXXCM4 Eg JOHN ADAMS PART No. AE-CB30